

Productivity

BENEFITS

- **Improve productivity with connection to Microsoft Office Project 2007**

The Microsoft Office Project Connector for Dynamics SL has been updated to Microsoft Office Project 2007. You can deliver financial insight to Project Managers in the environment in which they work—Office Project Professional and Business Portal.

- **Bring project accounting and project management together for efficiency**

Project accounting and project management are available to all involved in a project with the new Microsoft Dynamics SL Connector to Microsoft Office Project 2007. From small to large, Microsoft Office Project 2007 and Microsoft Dynamics SL provide a great way to manage the project status, resources and the revenue and expense of your projects.

- **Flexible Time Entry**

Whether your time entry is daily, weekly, bi-weekly or semi-monthly, the new Project Flex Time for Business Portal provides a user-friendly interface.

- **Assign Resources remotely**

Now project managers can assign users to a project, no matter where they are and also update or create budgets.

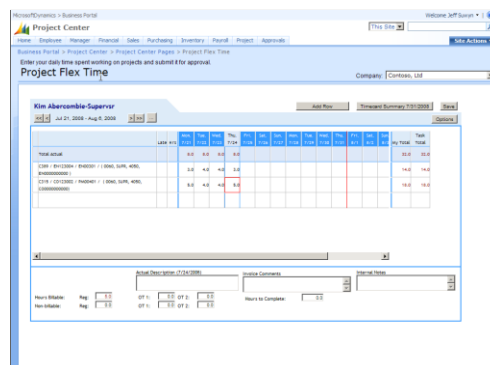
- **Subtasks– Work doesn't stop at the Task level**

Define and enter time and resources against subtasks with the new subtask support feature in both resource assignment and time entry.

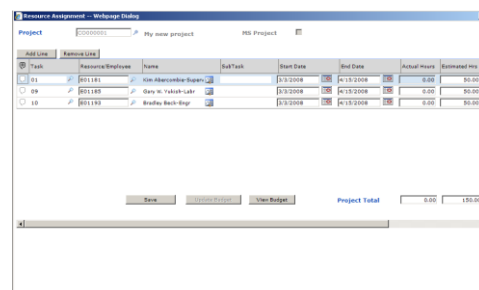
Microsoft Dynamics® SL

Microsoft Dynamics SL Feature Pack brings the functions a Project Manager expects and needs to the web. Now no matter where they are, they can do their job, set up a project, assign resources, and approve time and expense with the new Project Flex Time and Microsoft Office Project 2007 server connection.

There are several new features in the Microsoft Dynamics SL Feature Pack that will help project managers improve productivity as the worlds of Microsoft Dynamics SL and Office Project 2007 are brought together.



Flexible time entry provides a web-based user-friendly interface with Project Flex Time for Business Portal.



Project managers can now remotely access all Microsoft Dynamics SL Project-related features using the Internet. Project/task creation, editing, resource assignment, budgeting, time and expense entry and approval along with analysis of their projects can be performed remotely via the web with Business Portal.

FEATURES

BENEFITS

Expanded Business Portal Project Employee & Resource Maintenance capabilities	Project Managers will be able to remotely access all Microsoft Dynamics SL Project-related features using the Internet and to conduct project/task creation, editing, resource assignment, budgeting, time and expense entry and approval along with analysis of projects remotely, via the Web with Business Portal. New to the Feature Pack is the ability to assign resources to a Project and have the budget created.
Create project subtasks for entering time	Project and Task billing satisfies billing needs, but there are times when subtasks are needed to assign resources to and enter time against. New subtask definition is added to Microsoft Dynamics SL and are also supported in the Microsoft Project 2007 Server connector.
Task and Project Maximums	The ability to set up maximums based on Task/Account Category is available along with and can be combined with Project Maximums, a requirement for non-profit organizations and Government Contractors to manage their business.
Connector to Microsoft Office Project 2007	With the Feature Pack, the new Microsoft Dynamics SL Connector to Microsoft Office Project 2007 provides a great way to manage project status, resources and revenue and expenses for all types of projects, from small to large. <ul style="list-style-type: none">• Two way project-task-team data integration• Resource / Employee Integration• Actual Labor Posting• Subtask Tracking• Budget calculation from project resource assignment• View SL Project information from Microsoft Project
New Project Flex time web-based time entry screen to Business Portal	The Project Flex Time screen provides increased flexibility through a web-based solution for employees to enter time against projects, in periods that are flexible and match company and user processes and procedures. Whether time entry is daily, weekly, bi-weekly, semi-monthly or monthly, the Project Flex Time feature can accommodate your time entry needs.
New standards for Business Portal Notes & Comments entry	New Business Portal Notes and Comments Entry screens provide a standard user interface, and tools for entering and maintaining Business Portal document approval notes and the ability to view all notes and comments at all levels. Now approvers can view all invoices notes.



South Anna, Inc
PO Box 3568
Glen Allen, VA 23058-3568
804-316-9660
www.southanna.com

This document is for information purposes only.

MICROSOFT MAKES NO WARRANTIES, EXPRESS, IMPLIED, OR STATUTORY, AS TO THE INFORMATION IN THIS DOCUMENT.

Microsoft

© 2008 Microsoft Corporation. All rights reserved.

Microsoft, The Microsoft Dynamics Logo, are either registered trademarks or trademarks of Microsoft Corporation or Microsoft Business Solutions ApS in the United States and/or other countries. Microsoft Business Solutions ApS is a subsidiary of Microsoft Corporation.