

SYSPRO Lot Traceability



SYSPRO Lot Traceability is designed for manufacturers that require control over product tracking to achieve compliance and also to maintain quality and reputations. Within industries, such as aerospace, automotive, consumer packaged goods, medical device, pharmaceutical, food and beverage and numerous others, it has become increasingly important to be able to locate specific lots of finished goods to speed recalls when a defect or hazard of a particular part or ingredient has been identified. These situations can present themselves at any point within the supply chain.

Within SYSPRO, users can track materials from vendor receipt through delivery of the product to the customer, as well as all levels in between. Users can identify which materials require lot tracking and the stages of production where information needs to be recorded throughout the manufacturing process.

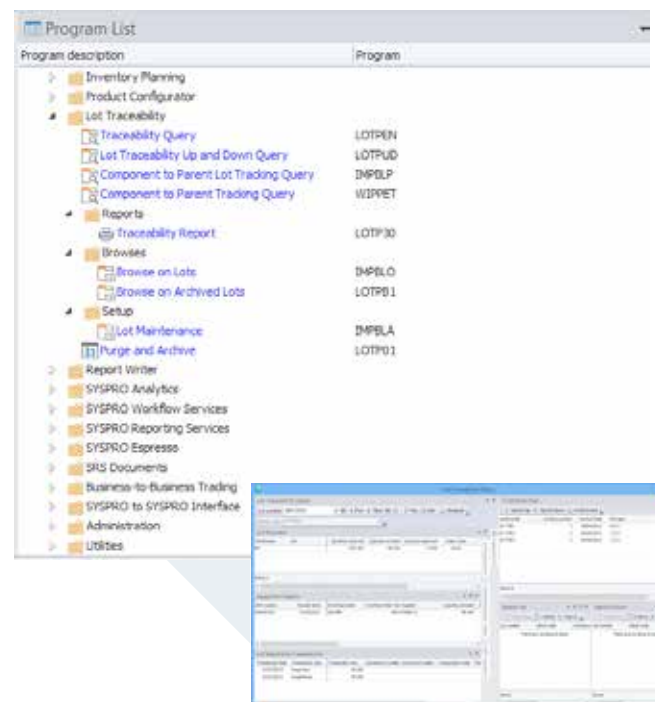
The benefits of Lot Traceability

- Tracks the part from receipt of materials, into production and through to product delivery and inventory transaction records lot/serial information
- Track which lot controlled items were used to produce specific finished products in manufacturing process
- History of traceable-item transactions for accountability and customer service follow-up
- Manual or automatic lot numbering by single products or batch
- Optional auto-depletion of lots in issue and sale transactions
- Optional tracking of lots from component to parent
- Shelf life and expiry date tracking
- Expiry dates included in materials requirements planning calculations
- Optional full or sample inspection of lots during purchase order and work order receipts

- Association of documentation to lots with applicable certifications, specifications, and quality records
- Bi-directional lot queries and reporting
- Reject control and documentation
- Archiving of lot information

Lot Traceability features

- Automatically or manually assign lot numbers as goods are received
- Assign alpha or numeric properties to traceable parts
- Supports both forward traceability from raw materials to customer shipments, and backward traceability from customer shipments, to manufactured lots, and finally to raw material/ingredient receipt from suppliers





SYSPRO Lot Traceability

Lot Traceability features ctd.

- Default lot number to work order number for ease of receipt
- Document all rejects and scrap
- Reserve lot numbers for products being manufactured
- Reserve component lots for issue to specific jobs
- Keep detailed notes on inspections
- Query by item use (which customer, invoice, job) or by item supplied (which supplier, purchase order, stock item)
- Trace serialized and non-serialized inventory items

Integration with SYSPRO

- Inventory
- Purchase Orders
- Sales Orders
- Work in Progress
- Returned Merchandise Authorization

Audit trails and reporting

- Extensive reporting in detail or summary
- Report on current and/or archived costs
- Audit trails by user, by date and time of input and or adjustment available within the system

The screenshot displays the SYSPRO Lot Traceability Query interface. The main window is titled 'Lot Traceability Query' and shows the following data:

Lot Traceability Query
 Lot number: 000120501
 Stock code: LOT1205

Lot Numbers

Warehouse	Bin	Quantity received	Quantity on hand	Quantity reserved	Expiry date
604		100.000	98.000	0.000	None

Inspection Details

GRN number	Receipt date	Purchase order	Purchase order line	Supplier	Quantity advised
00000253	31/03/2012	000399	0003	0000012	50.000

Lot Inspection Transactions

Transaction date	Transaction type	Transaction qua...	Concession number	Document number	Scrap/project code	File
31/03/2012	Inspection	50.000				
31/03/2012	Acceptance	50.000				

Archive Files

Archive file	Archive number	Archive date	Revision	Records
QLT7001	1	09/04/2012	6.0.0	136
QLT7002	2	06/06/2012	7.0.0	2
QLT7003	3	06/08/2013	7.0.0	4

The 'Program List' sidebar on the left shows the following structure:

- Inventory Planning
- Product Configurator
- Lot Traceability
 - Traceability Query
 - Lot Traceability Up...
 - Component to Parent
 - Component to Parent
- Reports
 - Traceability Repo...
- Browses
 - Browse on Lots
 - Browse on Archived Lots
- Setup
 - Lot Maintenance
 - Purge and Archive
- Report Writer
- SYSPRO Analytics
- SYSPRO Workflow Services
- SYSPRO Reporting Services
- SYSPRO Espresso
- SRS Documents
- Business-to-Business Trading
- SYSPRO to SYSPRO Inter...
- Administration
- Utilities