

SYSPRO Point of Sale



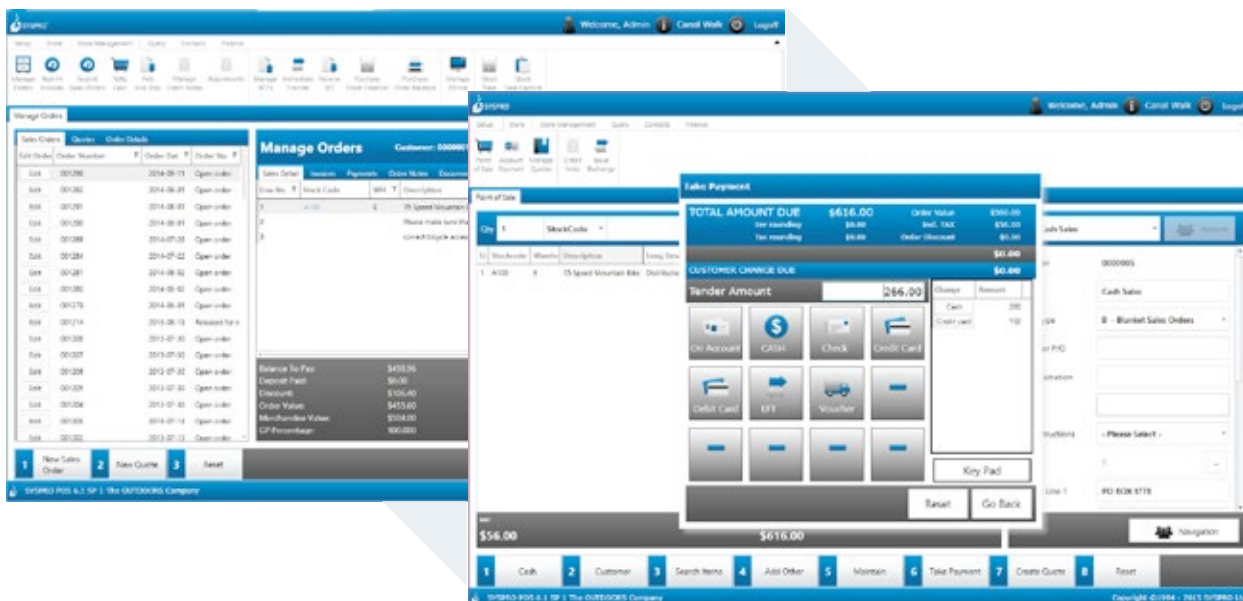
SYSPRO Point of Sale offers a wide variety of features encompassing all your in-store requirements, enabling you to deliver a superior experience to your store personnel and customers.

SYSPRO Point of Sale is a scalable web-deployed solution which has been specifically designed to handle the customer-facing, "front-end" of your business. It has a flexible n-tier architecture enabling a high degree of extensibility and interoperability. With 'Always-On' design, you can still deliver real-time operations when and where they matter most, because your store will continue to deliver critical customer facing functionality, even if the connection to the central database is lost.

SYSPRO Point of Sale has been engineered with robust and easily-managed security options and features specific to a point-of-sale environment, which ensures your processes, checkpoints and supervisor overrides are in place at the cash collection heart of your business.

The Benefits of SYSPRO Point of Sale

- Complete on-line and off-line trading functionality which means that should your network or server go down, your critical sales functions will continue to work without any interruptions
- Access from anywhere so there is no need to be at the till to access reporting or management functions
- Reduced network traffic due to an optimized web-based interface
- State-of-the-art, touch screen-ready interface
- Location or branch-specific pricing options to allow store managers to set their own pricing
- Ease of deployment and hassle-free maintenance
- Robust and easy to manage security options



SYSPRO

Point of Sale

SYSPRO Point of Sale Features

- Comprehensive offline capability
- Full touch screen, barcode scanning and printing and cash drawer integration
- Full keyboard and mouse driven interface with the option to utilise touchscreen technologies for the sales and payment functions
- Mobile tellers who are not restricted to a single till point
- Cash or account based sales
- Split payments between cash, check, vouchers and bank cards
- Ability to create and confirm quotations from the point-of-sale
- Deposit management - ability to take deposit payments and manage them against an order
- Process credit notes or exchanges for existing invoices or till slips for both cash or account based customers
- Multiple printer definition per user and function, allowing for seamless document processing with the ability to customize standard document formats
- Lot traceable and serialized item sales
- Pricing by location or branch so the same item can be sold for a different price at different stores
- **Credit Note features**
 - Ability to add comment lines manually or automatically
 - Ability to change the warehouse against which the credit note is raised
 - Price control - all price and discount information against the invoice is picked up automatically
 - Credit quantity validation - the system will not allow the credit of a greater quantity than what was originally sold
- **Cash Rounding** - In the Invoices to round field the following options are available:
 - All - applies tax rounding to all invoices produced from Sales Orders or Dispatch Notes
 - Payments - applies tax rounding only to invoices processed using the Counter sales and Point of Sale programs
 - Cash payments - applies tax rounding only to invoices processed using Counter Sales and Point of Sale programs, where the Payment type is set to Cash for the Payment code used
- Quick and efficient customer search facility
- **Security**
 - Access control per user; role based security management and comprehensive permission security checkpoints
 - Flexibility to allow teller overrides for variances, pricing or setting of discount limits
 - Ability to configure required supervisor acceptance and override control over all sensitive functional areas

Take Payment			
TOTAL AMOUNT DUE	\$616.00	Order Total	\$790.00
Tax rounding	\$10.00	Incl. TAX	\$10.00
Tax rounding	\$0.00	Order Discount	\$0.00
			\$0.00
CUSTOMER CHANGE DUE	\$0.00		
Tender Amount	266.00	Change	Amount
On Account	CASH	Check	Credit Card
Ebit Card	EFT	Voucher	
Key Pad			
Reset		Go Back	



SYSPRO Point of Sale



SYSPRO Point of Sale features cont...

Customer cards

- A comprehensive customer card system is also fully integrated into the sales cycle, allowing for the determination and assigning of individual customer card credit limits within the overall account credit limit
- Through the integration with SYSPRO, history and reporting of all sales by customer card is enabled, allowing the overall account holder to view and understand the nature of all purchases for each individual card-holder
- The customer card system also fully integrates into SYSPRO's Contact Management module

Management and reporting

- Petty cash management
- Advanced cash-up functionality with cash book integration
- End-of-day and end-of-shift managed processes and reporting
- Supply chain transfers and goods in transit stock management functions, allowing you to transfer and receive stock from depots or other branches
- Immediate transfers allowing stock to be transferred from storeroom to showroom floor
- Complete sales audit trails

Integration with SYSPRO

- Accounts Receivable
- Cash Book
- General Ledger
- Inventory
- Sales Orders
- Contact Management
- Accounts Payable
- Trade Promotions

